

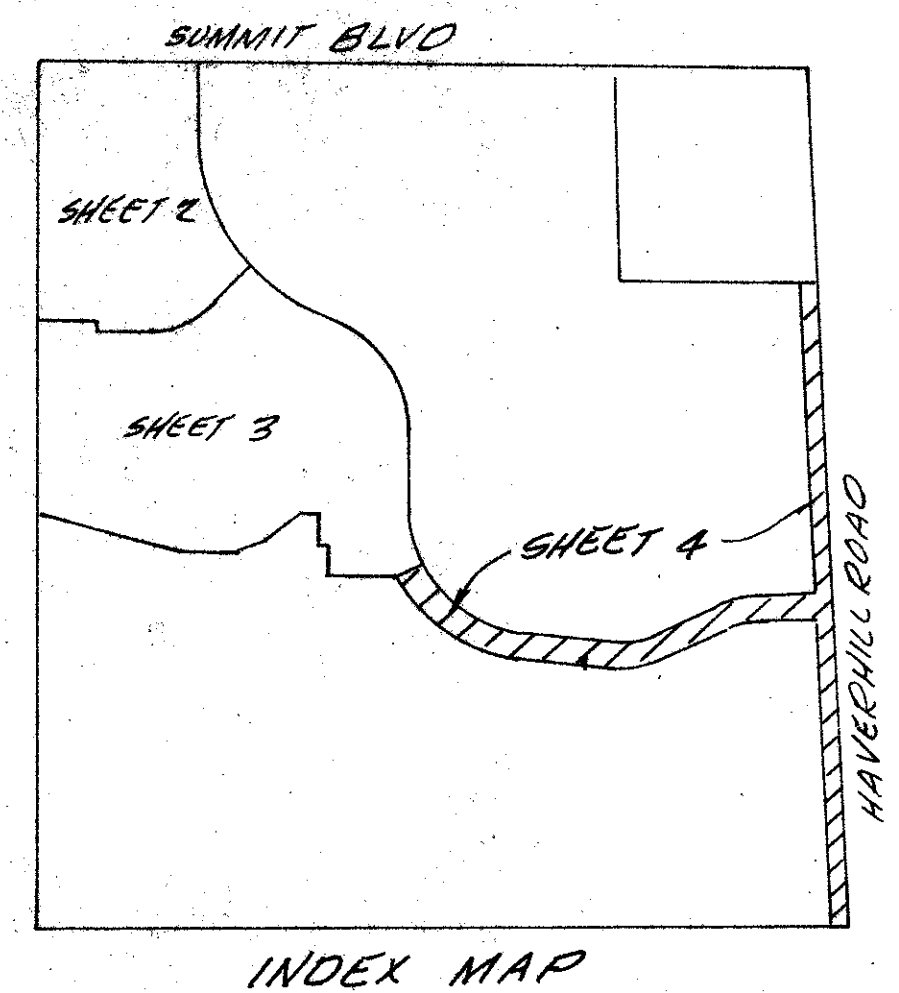
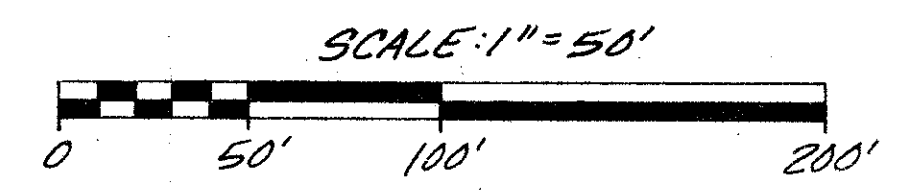
DRAWING NUMBER
52/34

DRAWING NUMBER

DRAWING NUMBER

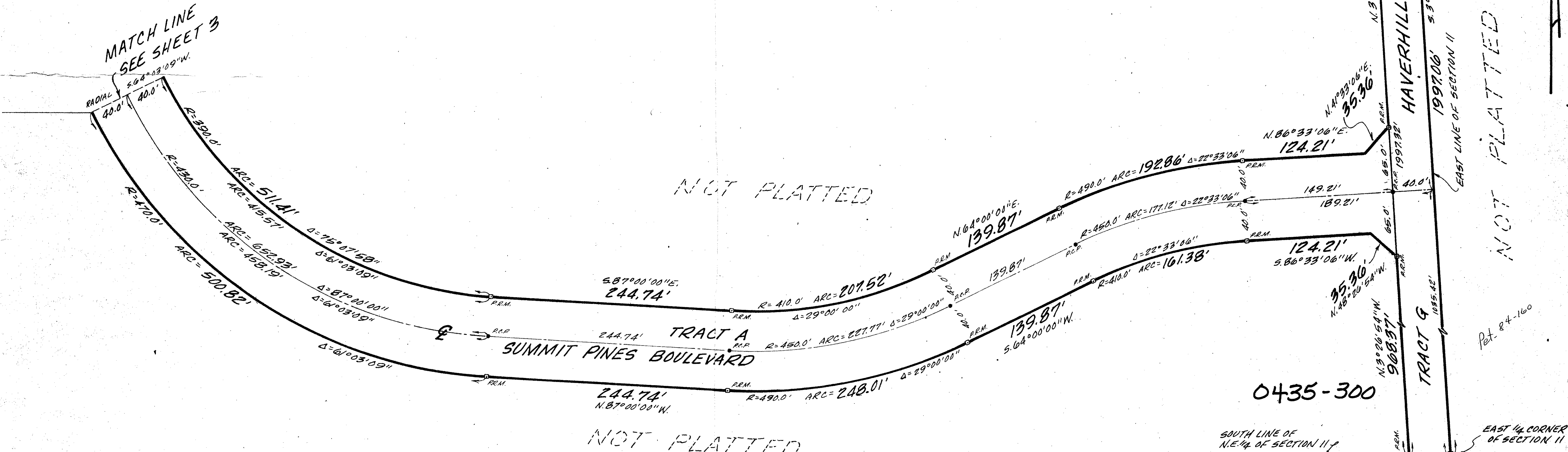
DRAWING NUMBER

PLAT OF
SUMMIT PINES UNIT ONE
A P.U.D.
SECTION II, TOWNSHIP 44 SOUTH, RANGE 42 EAST
PALM BEACH COUNTY, FLORIDA
SHEET 4 OF 4 SHEETS



INDEX MAP

52 / **34**



N.E. CORNER OF SECTION 11
605.68'
SOUTH LINE OF N.E. 1/4 OF N.E. 1/4 OF N.E. 1/4 OF SECTION 11
N. 89° 52' 06" E. 40.07'

HAYERHILL ROAD TRACT G
N. 3° 26' 54" W. 898.95'
N. 41° 23' 06" E. 35.36'

NOT PLATTED

Pet. # 4-160

0435-300

LAKE WORTH DRAINAGE DISTRICT'S LATERAL 7 (4" RM) 40.05'
GARDEN HILLS UNIT ONE
PLAT BOOK 45 PAGES 2, 3 & 4

Summit Pines #1
O'BRIEN, SUITER & O'BRIEN, INC.
ENGINEERS, SURVEYORS, LAND PLANNERS
2601 NORTH FEDERAL AVENUE, DELRAY BEACH, FLORIDA

DATE: JAN. 1985	SCALE: 1" = 50'
BOOK: M 43	SHEET: 4 OF 4
	NO: 84-7